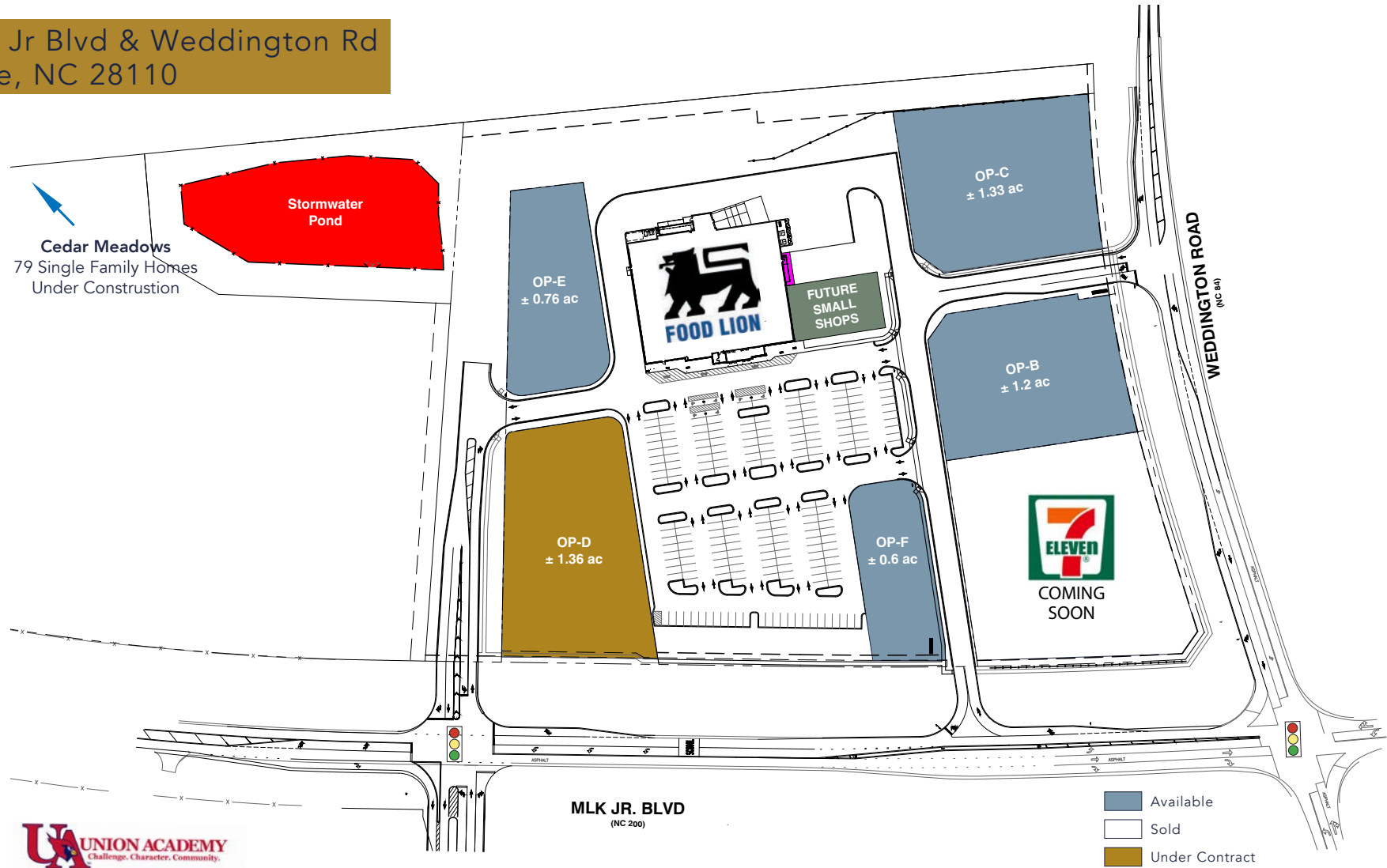


# FOOD LION SHOPPING CENTER MONROE, NORTH CAROLINA



N MLK Jr Blvd & Weddington Rd  
Monroe, NC 28110



For more information, please contact:



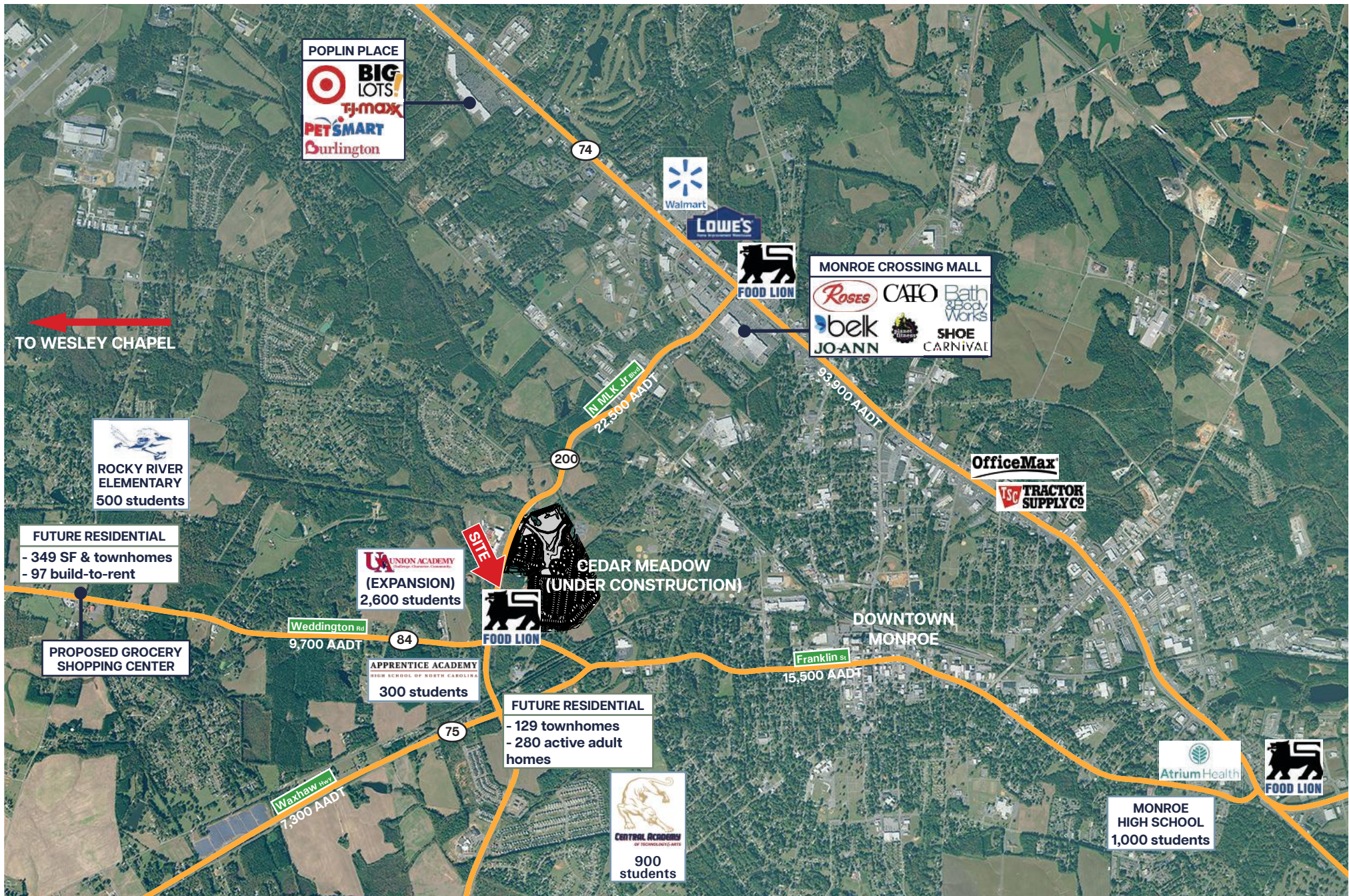
**LAUREN HANSEN**  
704.319.4937  
lahansen@astonprop.com

**MOLLY MORGAN**  
704.319.4936  
mmmorgan@astonprop.com

2825 South Blvd, Ste 300  
Charlotte, NC 28209  
www.astonprop.com



# FOOD LION SHOPPING CENTER MONROE, NORTH CAROLINA





## Outparcels Available ±0.6-1.36 ac

N MLK Jr Blvd 16,800  
Waxhaw Hwy 10,100  
W Franklin St 15,900

### TRAFFIC COUNTS



### PROPERTY FEATURES

- Food Lion anchored center located in designated retail corridor between Wesley Chapel and Monroe
- Recently expanded Union Academy Charter School has over 2,000 students enrolled and is located across N MLK Blvd
- Area experiencing strong residential growth including single family residential and multi-family projects at the intersection

### DEMOGRAPHICS

RADIUS	1 MILE	3 MILES	5 MILES
POPULATION	2,768	26,329	51,763
DAYTIME POPULATION	361	13,233	24,904
AVG HH INCOME	\$81,732	\$80,781	\$100,051



For more information, please contact:



**LAUREN HANSEN**  
704.319.4937  
lahansen@astonprop.com

**MOLLY MORGAN**  
704.319.4936  
mmmorgan@astonprop.com

2825 South Blvd, Ste 300  
Charlotte, NC 28209  
www.astonprop.com