

36&

NODA

CHARLOTTE, NC



NODA **NEIGHBORHOOD 10** **EILEN JEWELL** **10** **10**
THEATRE **13** **SPAFFORD** **22** **LARKIN PO**



501-517 E 36th St.

36 & NODA



ICONIC LOCATION

26,447 SF of experiential retail at the prominent intersection of 36th & North Davidson in Charlotte's arts and entertainment district.

CONNECTED & WALKABLE

One block from the LYNX Blue Line, surrounded by multifamily, office, and retail driving consistent foot traffic.

AUTHENTIC CHARACTER

Originally built in 1947 and redeveloped in 2016, the property blends historic charm with a vibrant, creative identity.

EVOLVING ENTERTAINMENT DISTRICT

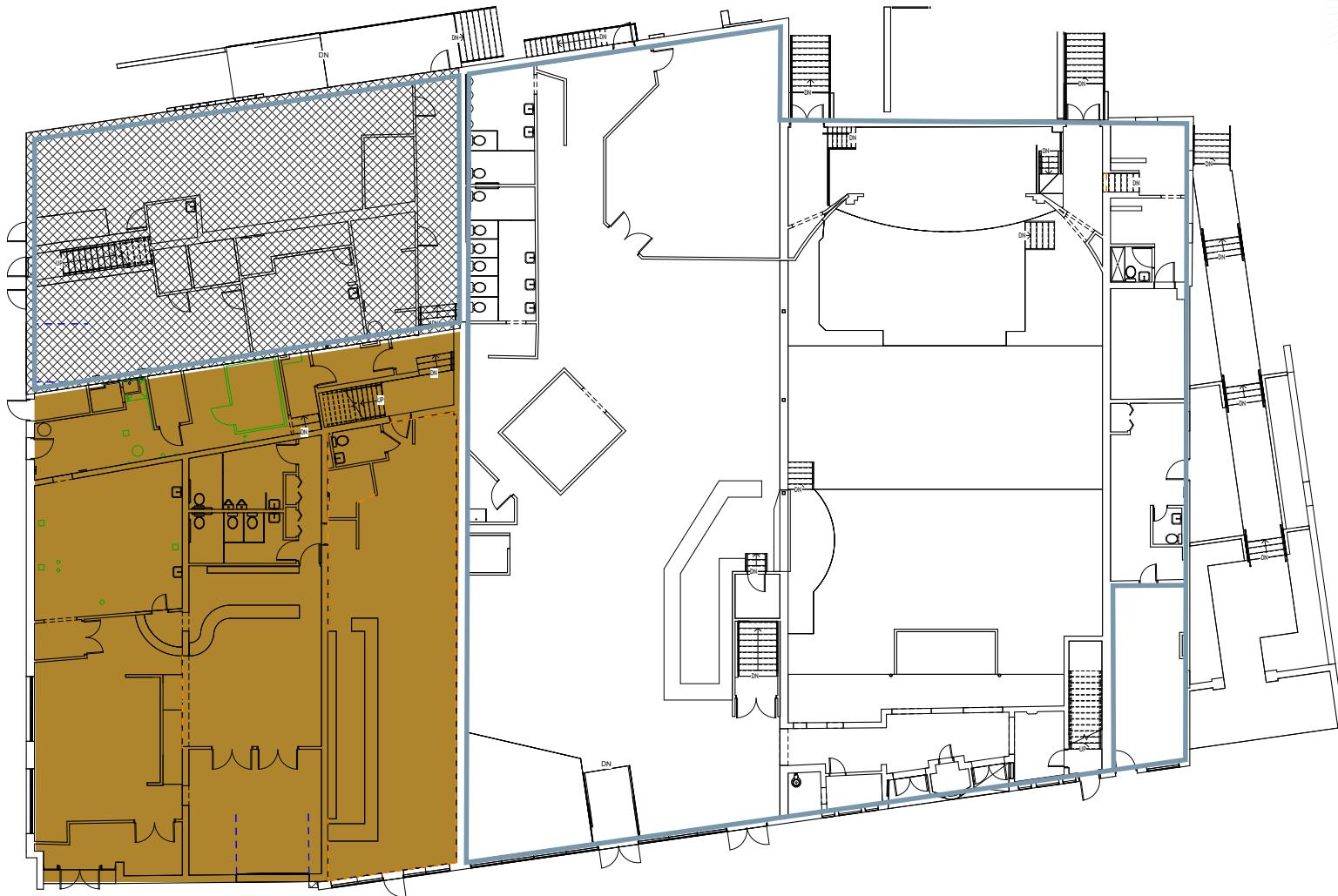
Renovations to the Neighborhood Theatre begin Summer 2026, further strengthening the area's appeal as a destination.

DEMOGRAPHICS

RADIUS	1 MILE	3 MILES	5 MILES
POPULATION	16,641	117,883	305,732
DAYTIME POPULATION	5,278	81,049	174,181
AVG HH INCOME	\$119,470	\$113,332	\$124,890

36& NODA

Shop	Tenant	Sq Ft
F	Salud Cervceria	5,438
G	AVAILABLE	4,992
H	Neighborhood Theatre	13,242
I	Johnny Fly	700



Johnny Fly™



36 & NODA

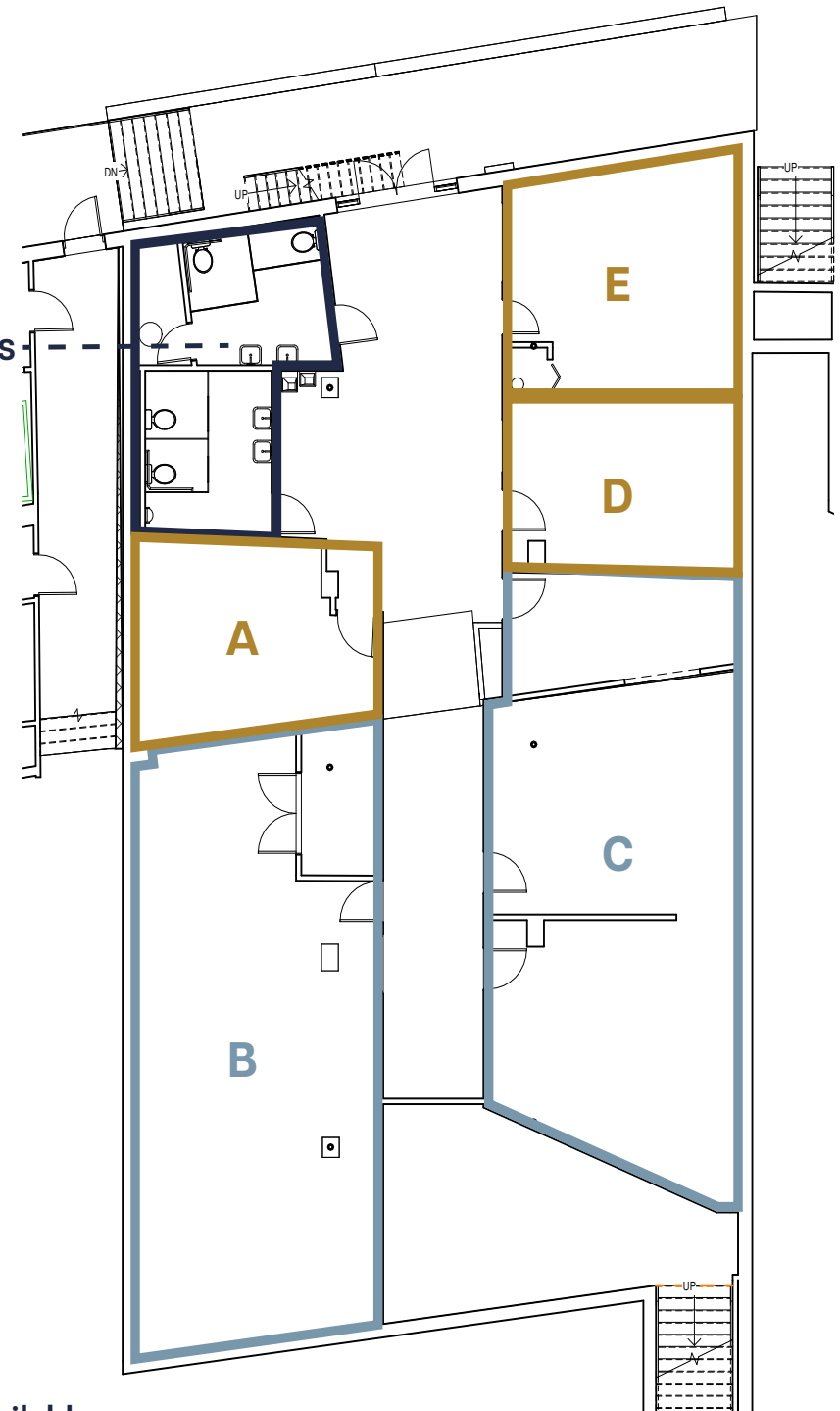
THE UNDERGROUND



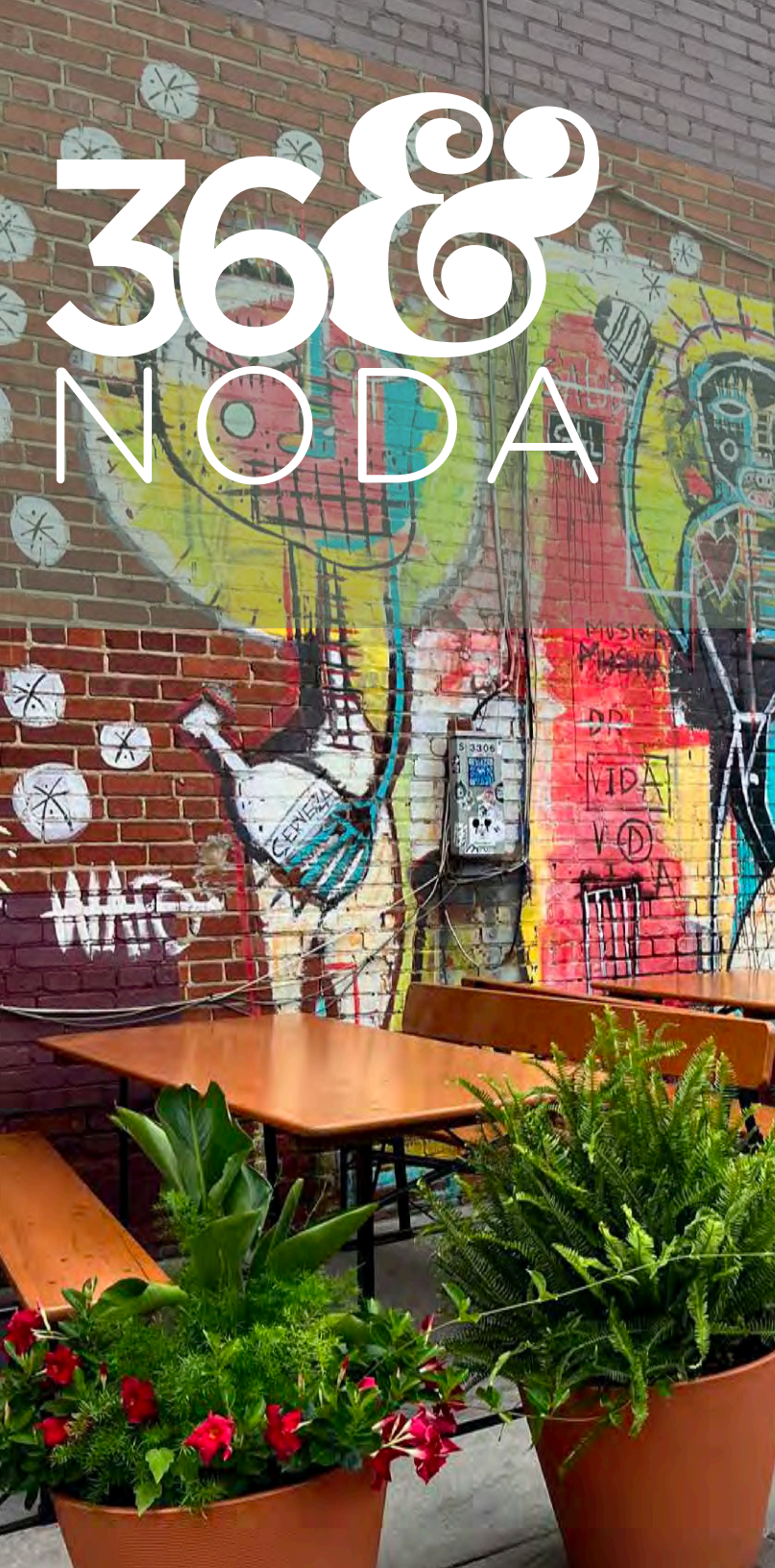
LOWER LEVEL

Shop	Tenant	Sq Ft
A	AVAILABLE	210
B	Johnny Fly Storage	900
C	Ink Lounge	1,000
D	AVAILABLE	250
E	AVAILABLE	325

RESTROOMS



368 NODA



For more information, please contact:

MOLLY MORGAN
704.319.4936
mmmorgan@astonprop.com

LAUREN HANSEN
704.319.4937
lahansen@astonprop.com